

Supporting Information

Org. Commun.

Molecular Modeling, Synthesis and Characterization of FOLR1 Specific Peptides for Tumor Targeting Activity

Özgür Yılmaz ^{1,*}

¹*Materials Technologies, Marmara Research Center, TUBITAK, 41470, Gebze, Kocaeli, Türkiye*

* Corresponding author: E-mail: yilmaz.ozgur@tubitak.gov.tr; Phone: +0(262) 677 2000/3165; Fax: +90(262) 641 2309.

Table of Contents		Page
Figure 2:	¹ H-NMR spectrum of RhB-K*FFF peptide	3
Figure 3:	¹ H-NMR spectrum of RhB-K*WFE peptide	4
Figure 4:	¹ H-NMR spectrum of RhB-K*YDY peptide	5
Figure 7:	RP-HPLC analytical spectrum of RhB-K*FFF peptide	6
Figure 8:	LC-HRMS/MS spectrum of RhB-K*FFF peptide	7
Figure 9:	RP-HPLC analytical spectrum of RhB-K*WFE peptide	8
Figure 10:	LC-HRMS/MS spectrum of RhB-K*WFE peptide	9
Figure 11:	RP-HPLC analytical spectrum of RhB-K*YDY peptide	10
Figure 12:	LC-HRMS/MS spectrum of RhB-K*YDY peptide	11

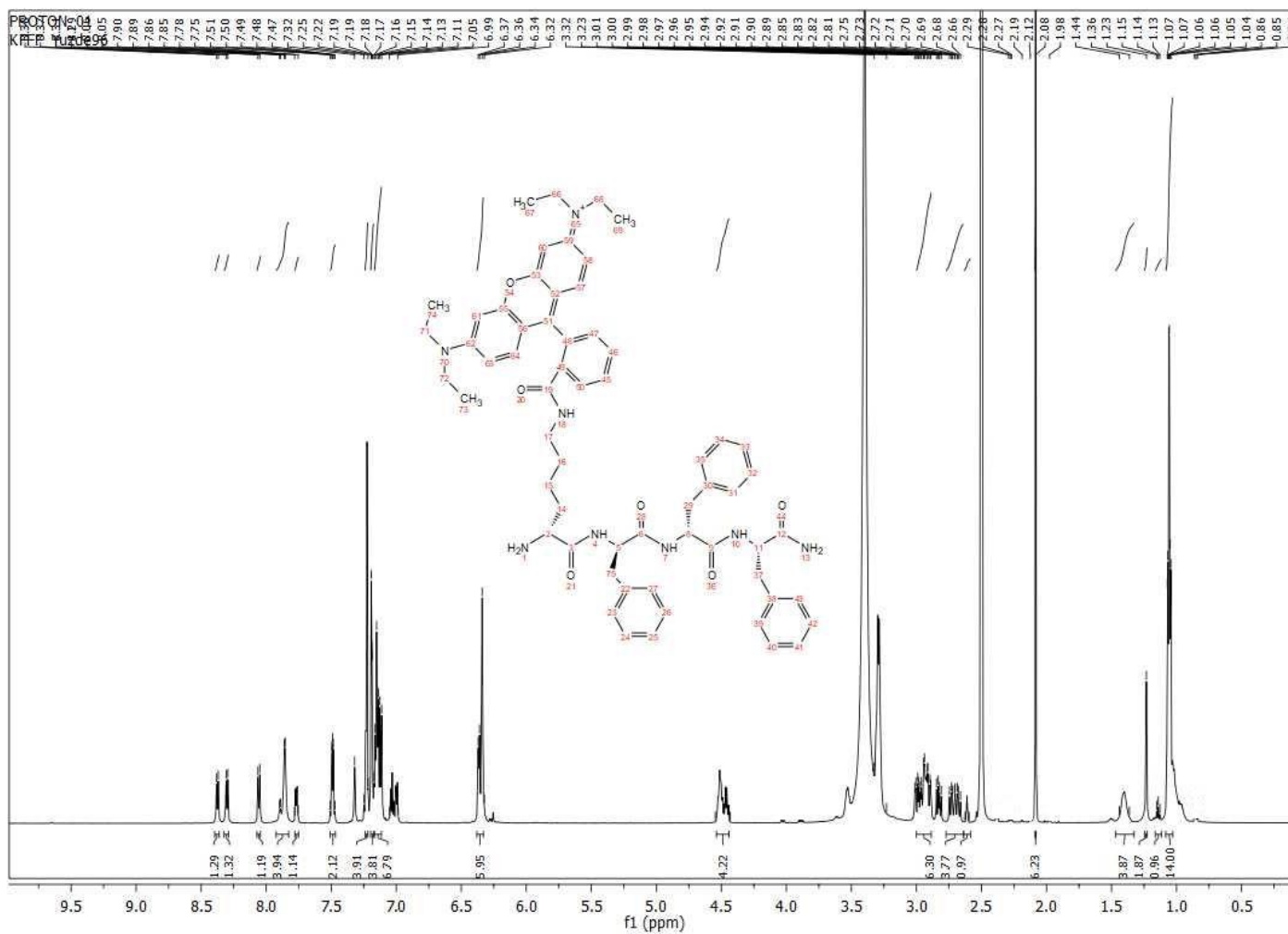


Figure 2: ¹H-NMR spectrum of RhB-K*FFF peptide

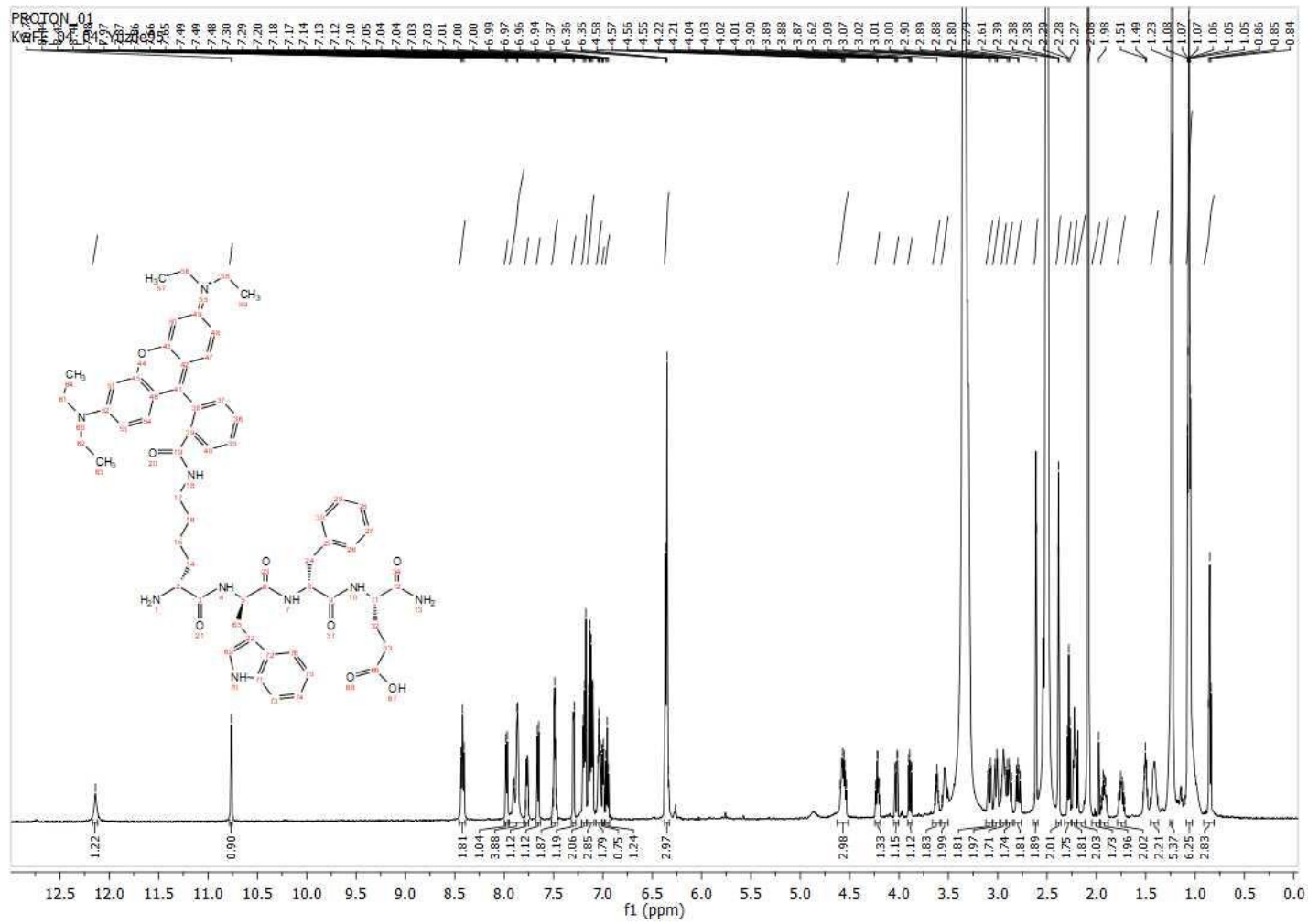


Figure 3: ^1H -NMR spectrum of RhB-K*WFE peptide

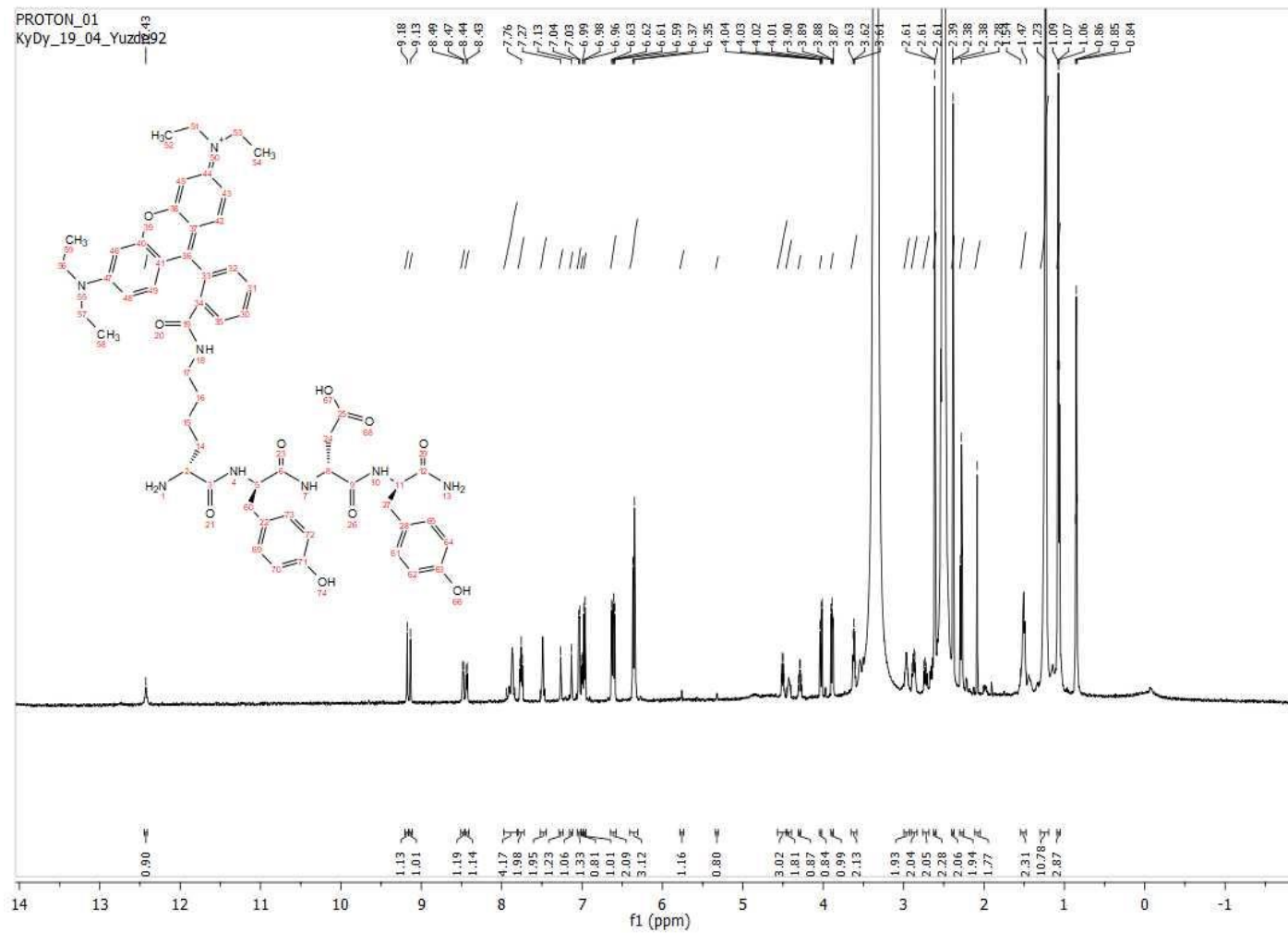


Figure 4: $^1\text{H-NMR}$ spectrum of RhB-K*YDY peptide

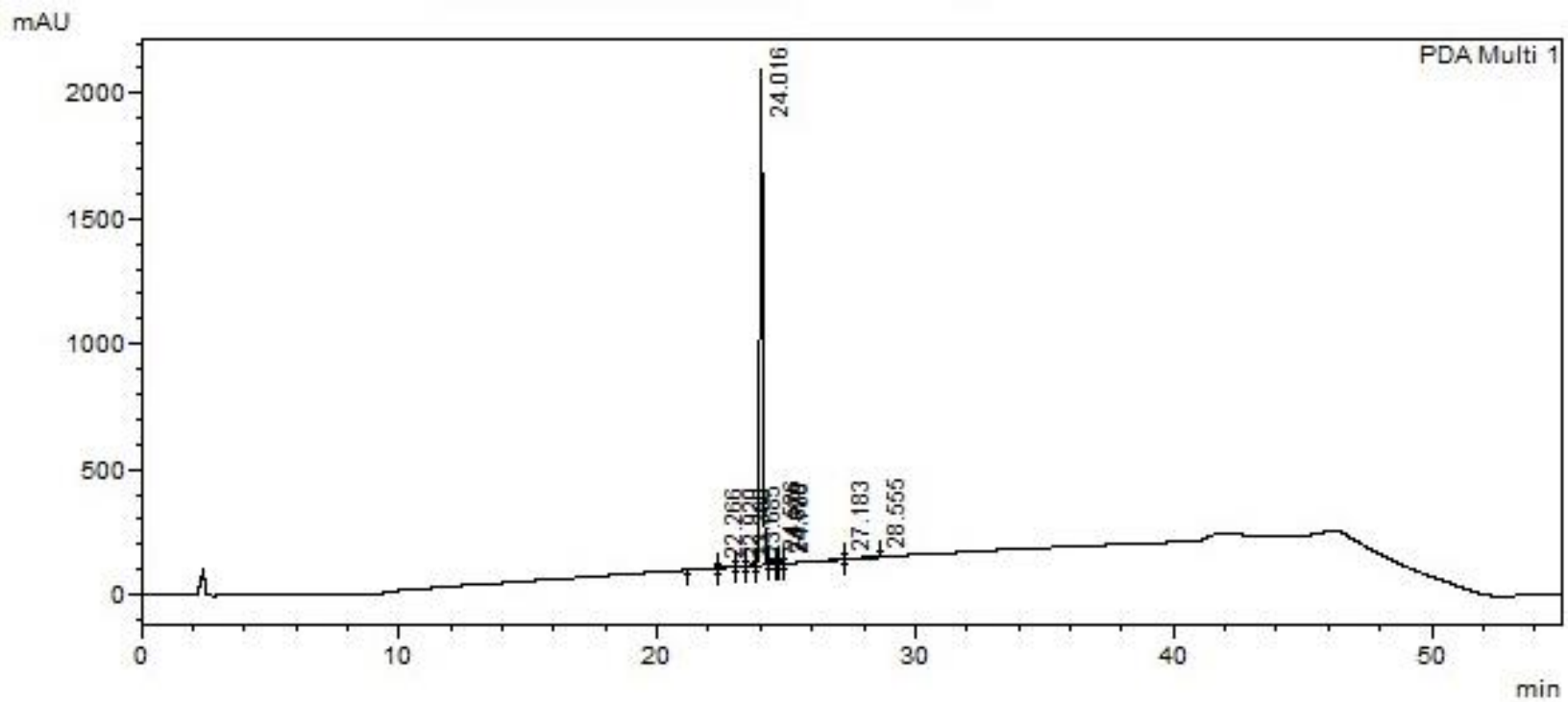


Figure 7: RP-HPLC analytical spectrum of RhB-K*FFF peptide

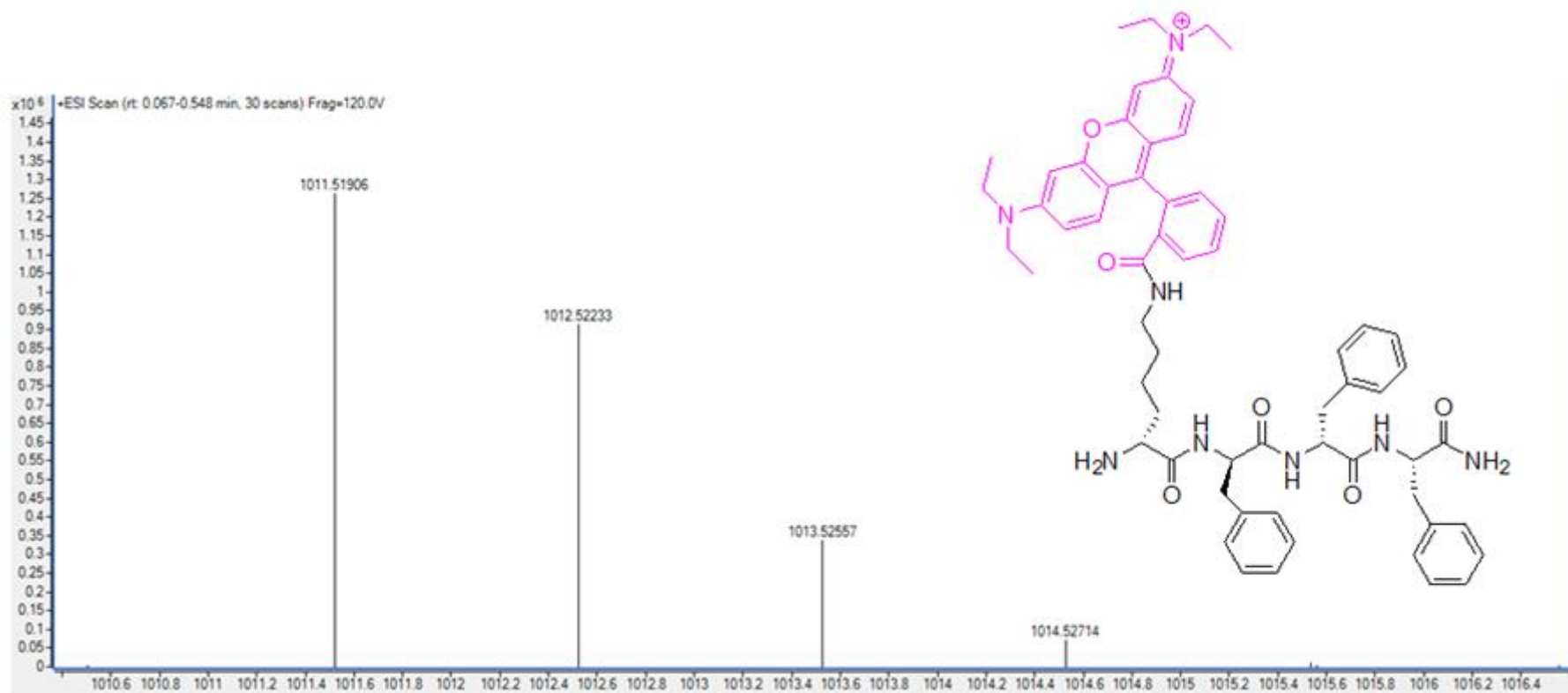


Figure 8: LC-HRMS/MS spectrum of RhB-K*FFF peptide

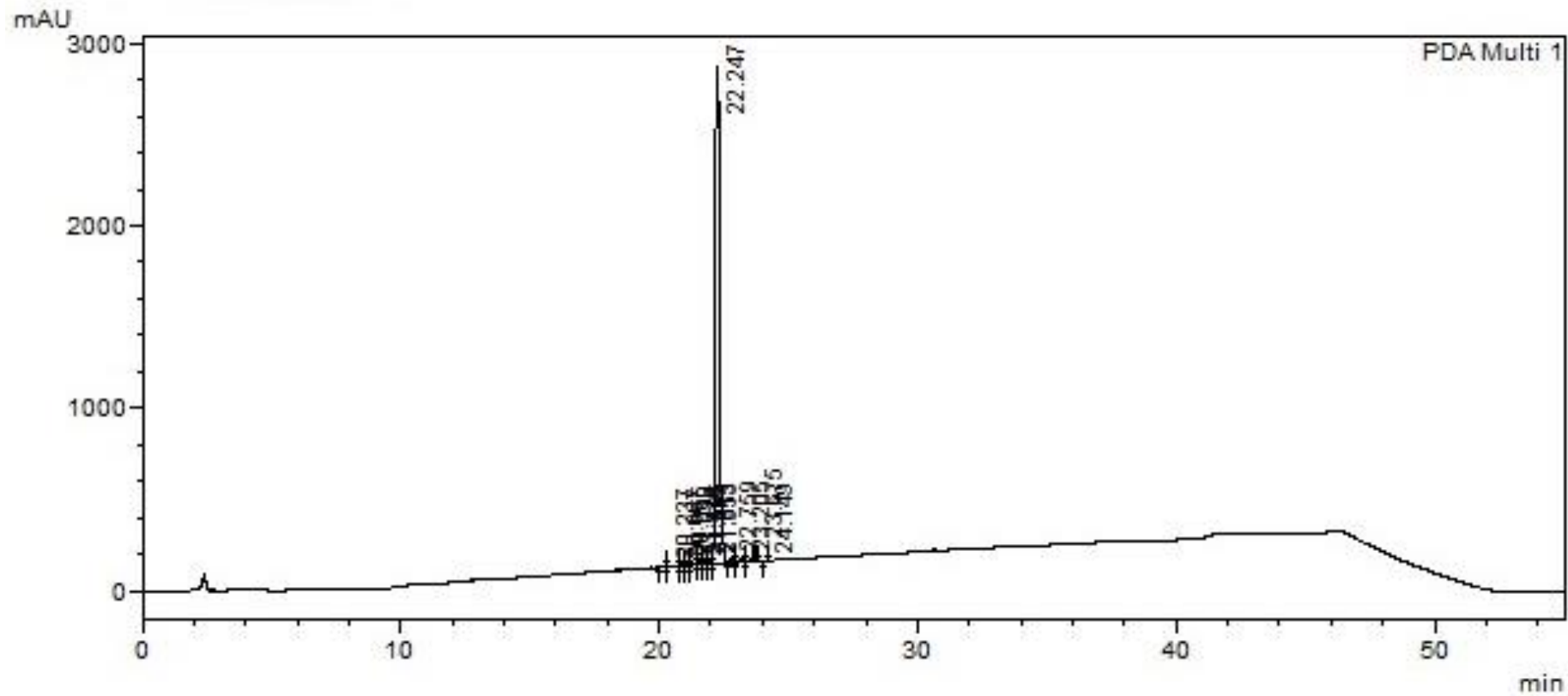


Figure 9: RP-HPLC analytical spectrum of RhB-K*WFE peptide

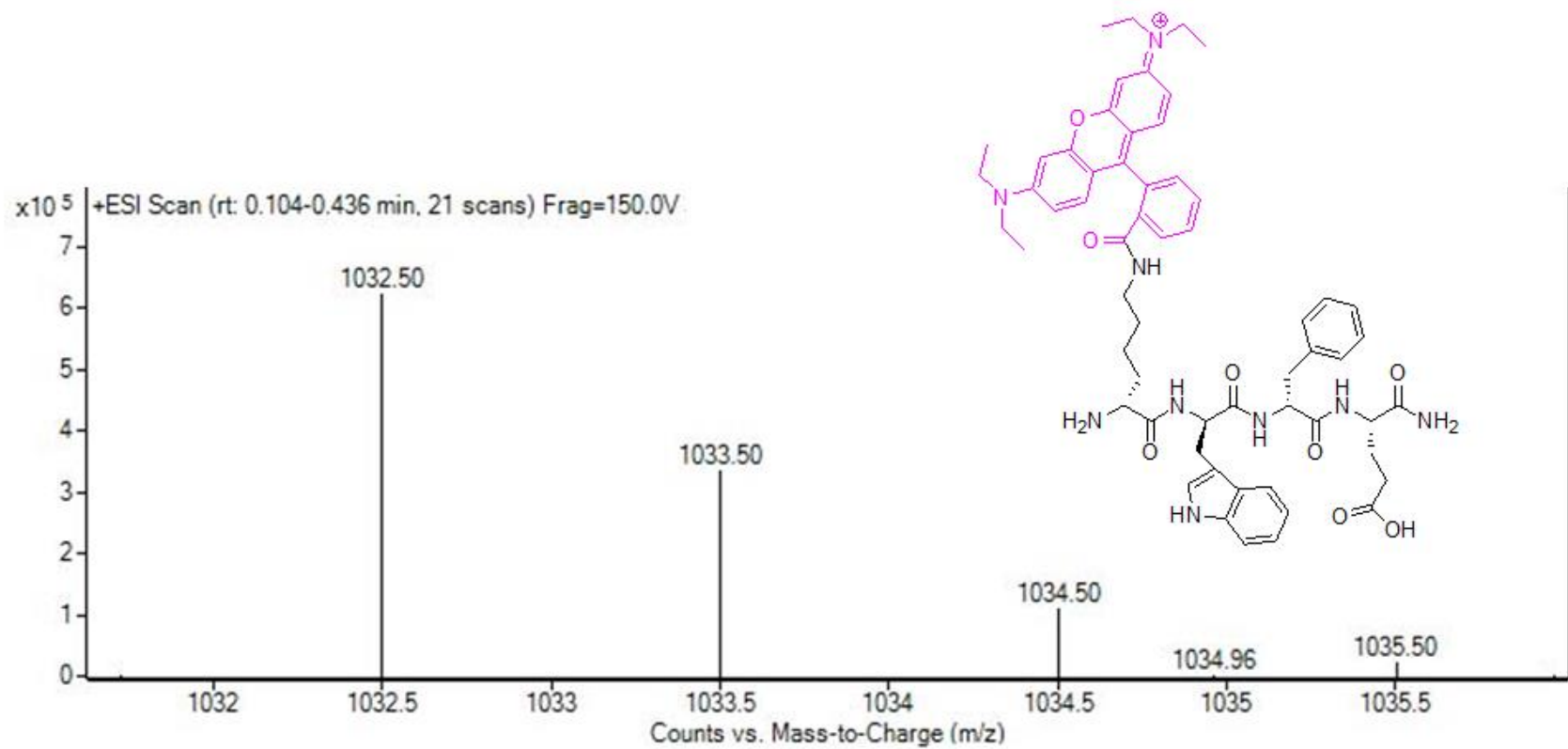


Figure 10: LC-HRMS/MS spectrum of RhB-K*WFE peptide

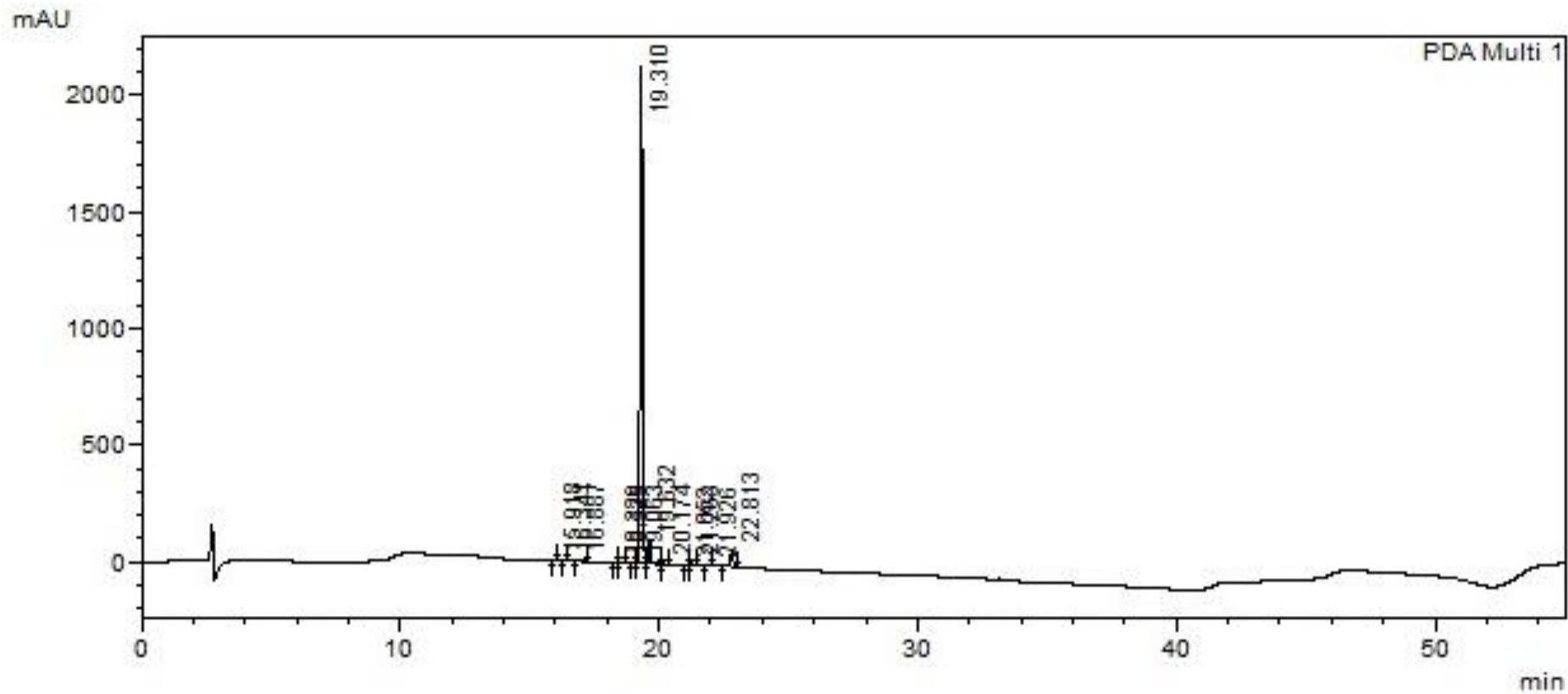


Figure 11: RP-HPLC analytical spectrum of RhB-K*YDY peptide

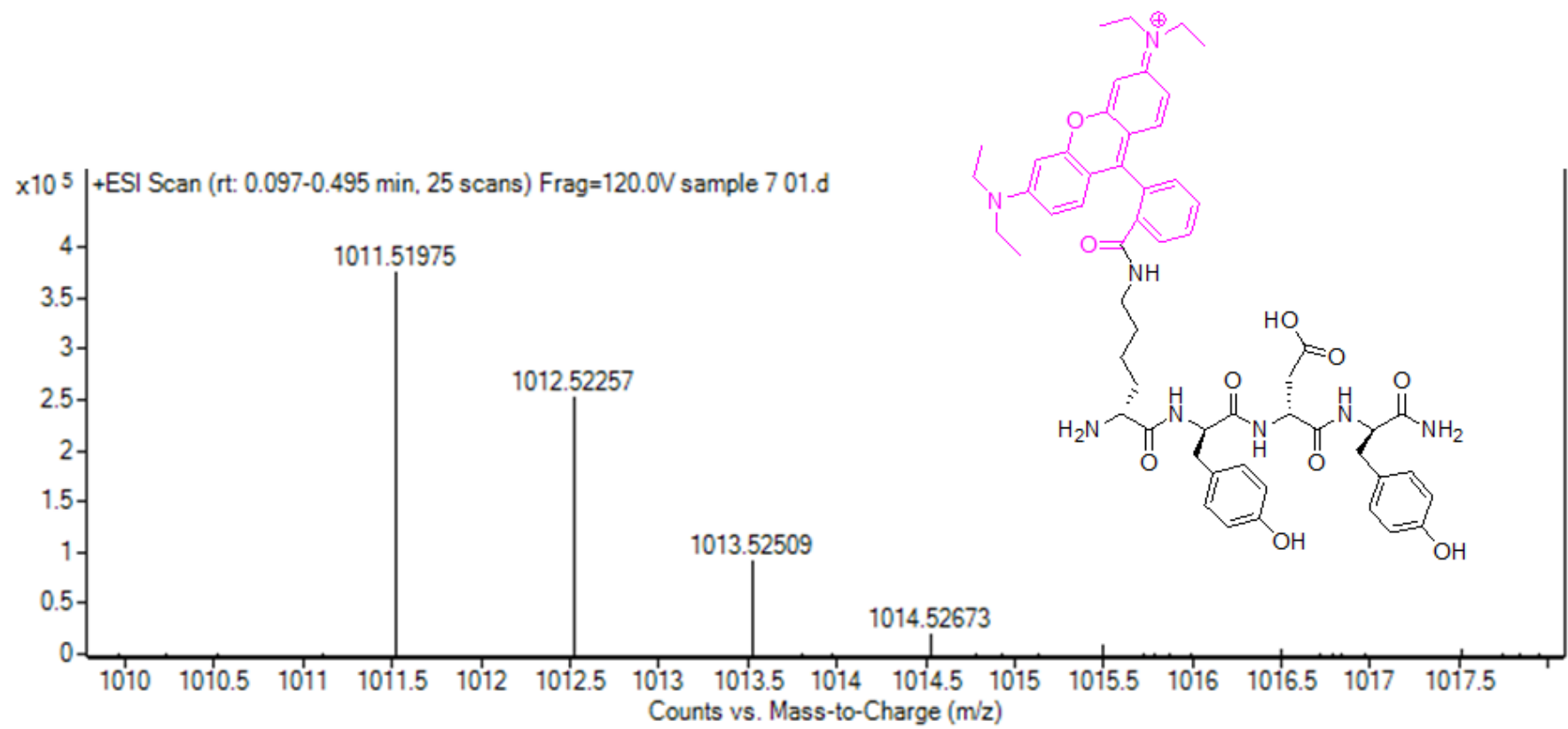


Figure 12: LC-HRMS/MS spectrum of RhB-K*YDY peptide